

# Navigation (Submenu)

This section explains how to Navigate the apps on your Chromebook.

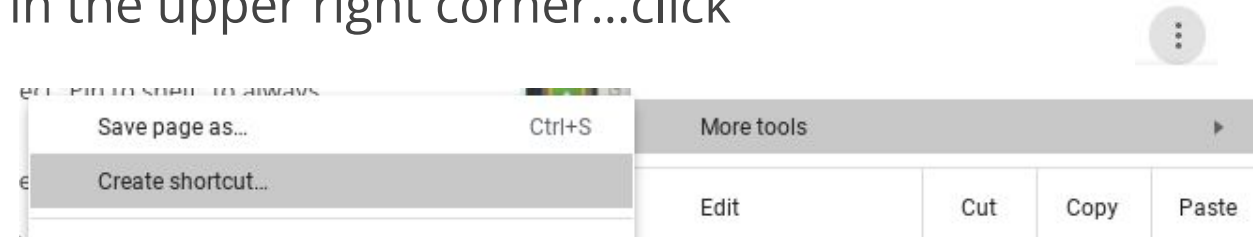
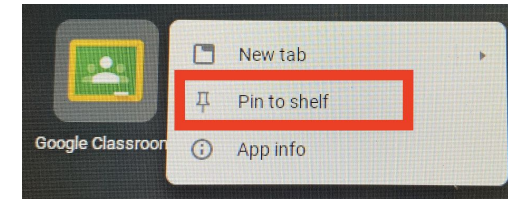
1. [Navigate the Desktop](#) (written instructions)
2. [Navigate the Desktop](#) (video tutorial)
3. [Navigate with the Waffle](#)
4. [Get to Know Your Files App](#)

# Video Tutorial - Navigate the Desktop



# Navigate the Desktop

- Swipe up to see all of your apps
- Press and hold an app and select “Pin to shelf” to always have access to it.
- Press, hold and drag apps to rearrange them
- Add an app (or any website) to your desktop
  - Go to the app/site...click the three dots in the upper right corner...click More tools...Click Create Shortcut

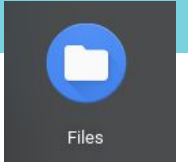


- Drag apps on top of each other to create folders
- To get to an app or site, click/tap it from the desktop or shelf

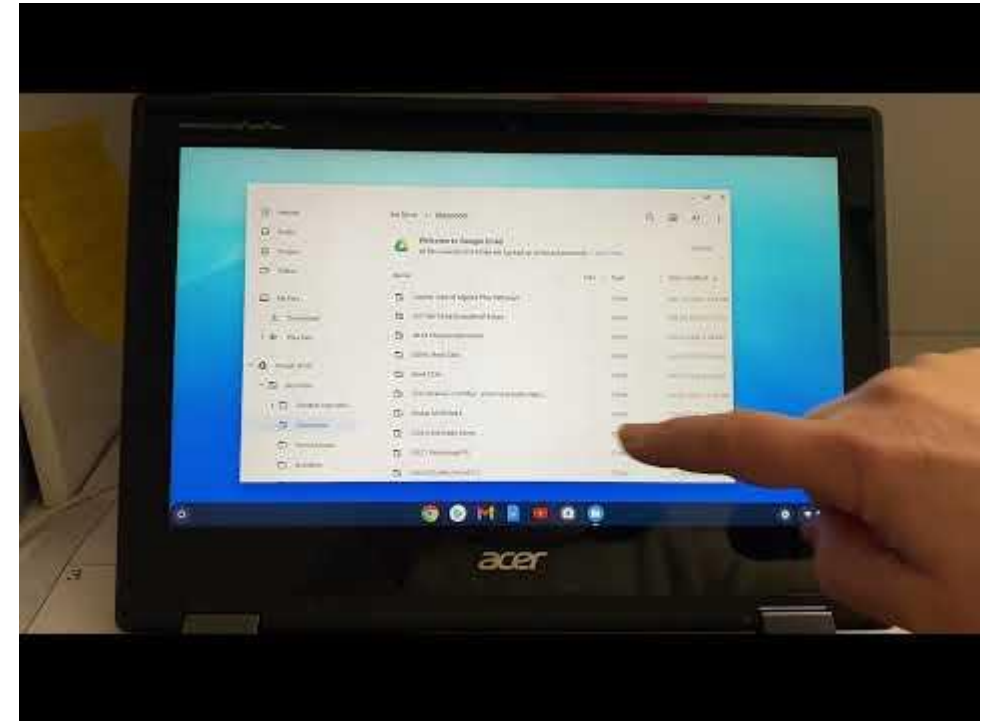


Video on next slide

# Get to Know Your Files App



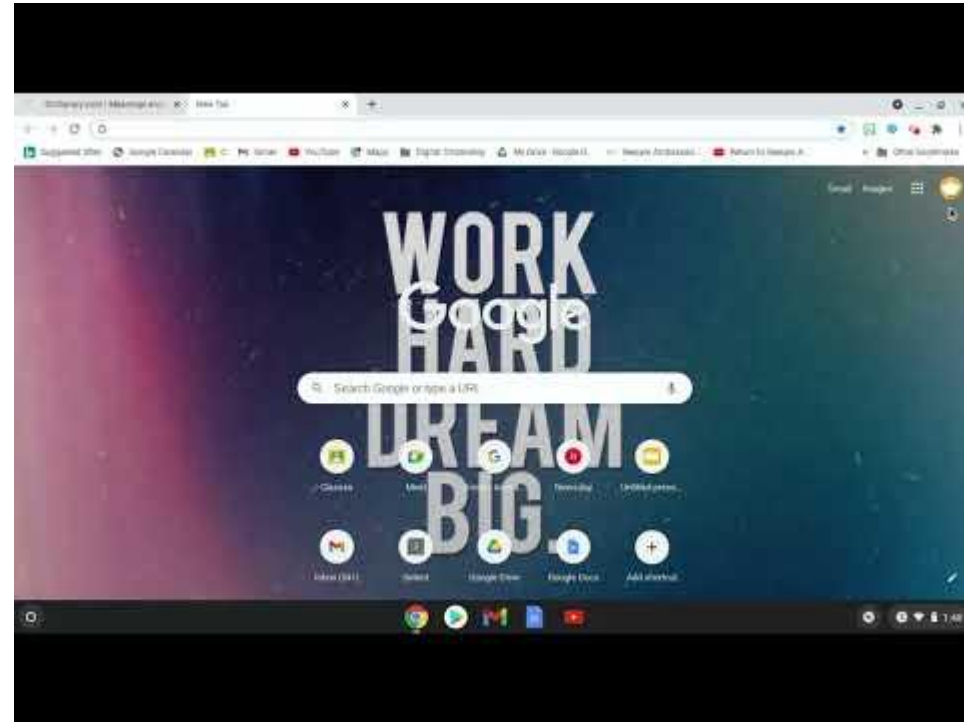
- Find your Files app by swiping up or tapping the launcher button
- Tap/Click it to open it
- 2 Main Sections
  - **Downloads** is where you will find the files you have downloaded to your Chromebook.
  - **Google Drive** is where you will find files in your Google Drive
- My Files...Classroom is where you will find all of the folders and files for your classes in Google Classroom. **DO NOT DELETE ANYTHING IN THERE!**



# Navigate with the Waffle

- Finding your Waffle
  - Get a new tab
  - Or, go to Google.com
- Get to all of your Google Apps from the Waffle
- Google Classroom loves tabs!

Gmail Images





# Credits.

Presentation Template: [SlidesMania](#)

Images: [Unsplash](#)

*Fonts used in this presentation: Open Sans and Oswald*



**Free** themes and templates for  
**Google Slides** or **PowerPoint**

**NOT to be sold as is or modified!**

Read [FAQ](#) on [slidesmania.com](https://slidesmania.com)

Do not remove the [slidesmania.com](https://slidesmania.com) text on the sides.

*Sharing is caring!*

---

